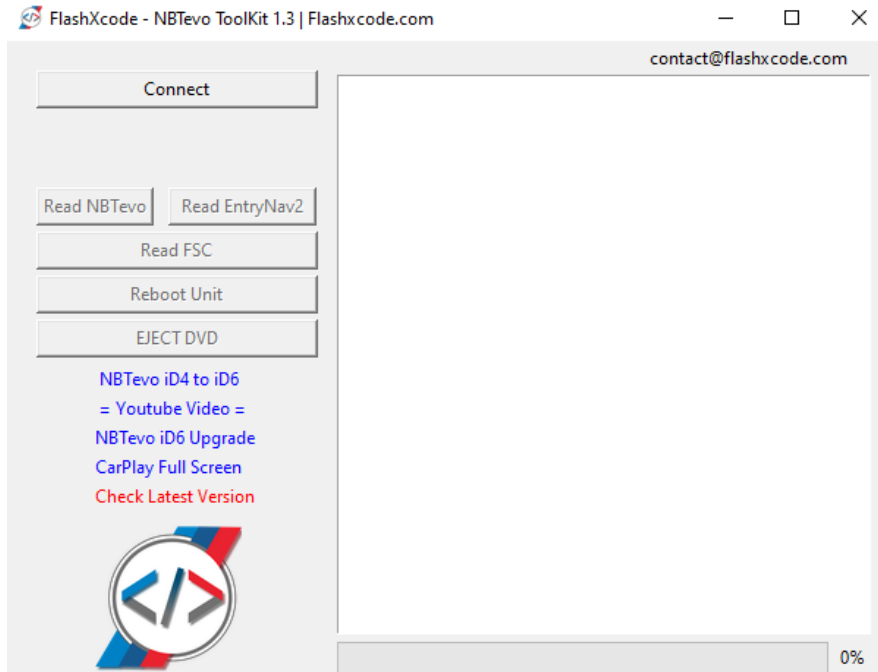
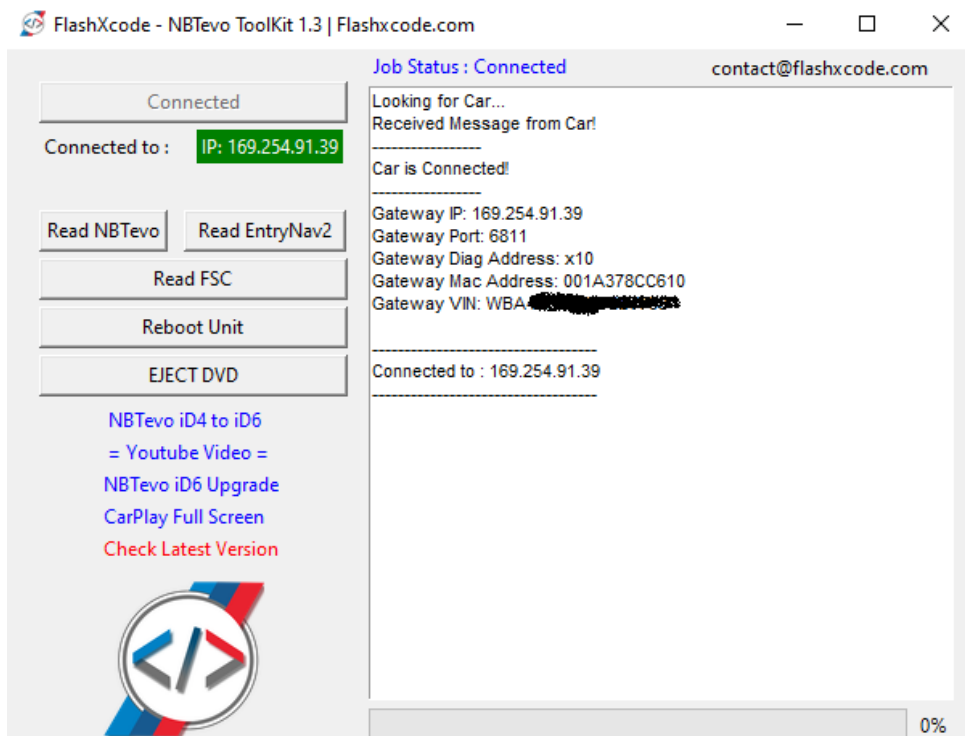


FlashXcode ToolKit - How to:

Go to <https://mega.nz/folder/szBnzlQD#oQkK3DWg7Cxx1Olfmzchvg> and download the latest version



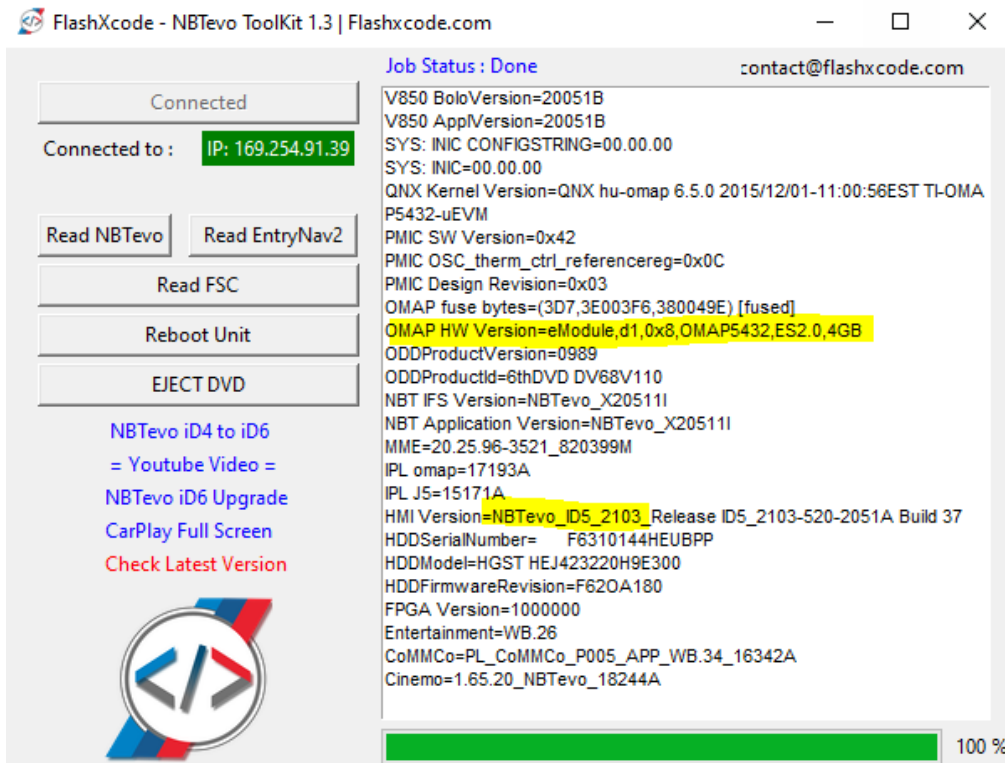
Click Connect



Click on Read NBTevo or EntryNav2

You will see the Memory of your Head Unit together with the Version

Scroll down for more useful info:



FlashXcode - NBTevo ToolKit 1.3 | Flashxcode.com

Job Status : Done contact@flashxcode.com

Connected

Connected to : IP: 169.254.91.39

Read NBTevo Read EntryNav2

Read FSC

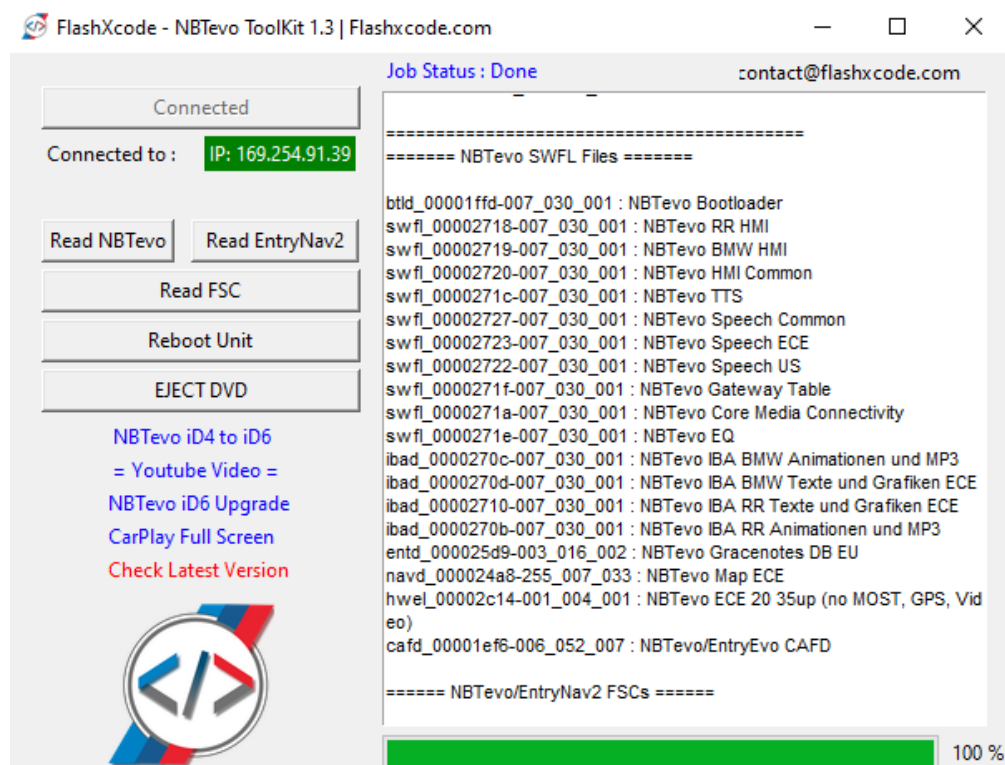
Reboot Unit

EJECT DVD

NBTevo iD4 to iD6
= Youtube Video =
NBTevo iD6 Upgrade
CarPlay Full Screen
Check Latest Version

V850 BoloVersion=20051B
V850 AppVersion=20051B
SYS: INIC CONFIGSTRING=00.00.00
SYS: INIC=00.00.00
QNX Kernel Version=QNX hu-omap 6.5.0 2015/12/01-11:00:56EST TI-OMA
P5432-uEVM
PMIC SW Version=0x42
PMIC OSC_therm_ctrl_referencereg=0x0C
PMIC Design Revision=0x03
OMAP fuse bytes=(3D7,3E003F6,380049E) [fused]
OMAP HW Version=eModule,d1,0x8,OMAP5432,ES2.0,4GB
ODDProductVersion=0989
ODDProductId=6thDVD DV68V110
NBT IFS Version=NBTevo_X20511I
NBT Application Version=NBTevo_X20511I
MME=20.25.96-3521_820399M
IPL omap=17193A
IPL J5=15171A
HMI Version=NBTevo_ID5_2103_Release ID5_2103-520-2051A Build 37
HDDSerialNumber= F6310144HEUBPP
HDDModel=HGST HEJ423220H9E300
HDDFirmwareRevision=F620A180
FPGA Version=1000000
Entertainment=WB.26
CoMMCo=PL_CoMMCo_P005_APP_WB.34_16342A
Cinemo=1.65.20_NBTevo_18244A

100 %



FlashXcode - NBTevo ToolKit 1.3 | Flashxcode.com

Job Status : Done contact@flashxcode.com

Connected

Connected to : IP: 169.254.91.39

Read NBTevo Read EntryNav2

Read FSC

Reboot Unit

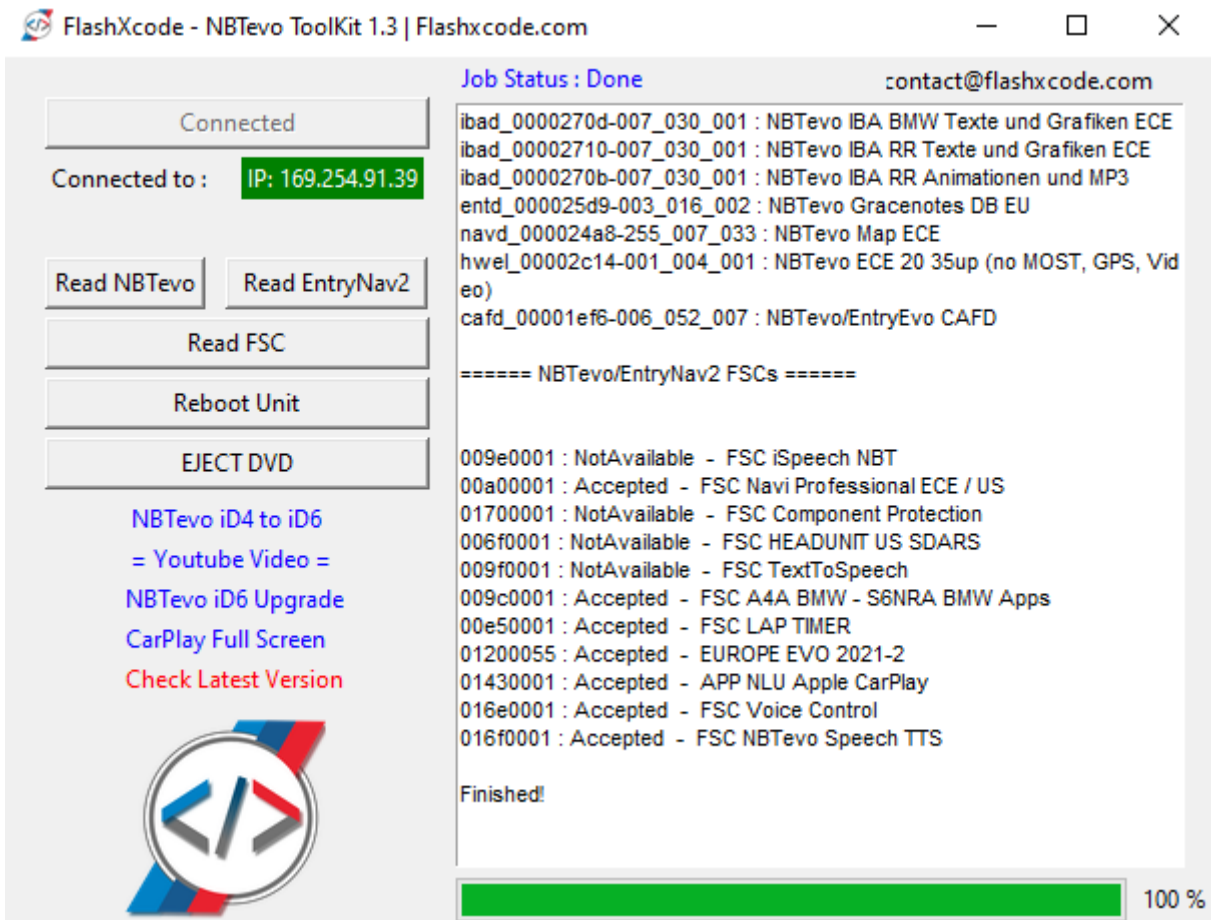
EJECT DVD

NBTevo iD4 to iD6
= Youtube Video =
NBTevo iD6 Upgrade
CarPlay Full Screen
Check Latest Version

=====
===== NBTevo SWFL Files =====
=====
btld_00001ffd-007_030_001 : NBTevo Bootloader
swfl_00002718-007_030_001 : NBTevo RR HMI
swfl_00002719-007_030_001 : NBTevo BMW HMI
swfl_00002720-007_030_001 : NBTevo HMI Common
swfl_0000271c-007_030_001 : NBTevo TTS
swfl_00002727-007_030_001 : NBTevo Speech Common
swfl_00002723-007_030_001 : NBTevo Speech ECE
swfl_00002722-007_030_001 : NBTevo Speech US
swfl_0000271f-007_030_001 : NBTevo Gateway Table
swfl_0000271a-007_030_001 : NBTevo Core Media Connectivity
swfl_0000271e-007_030_001 : NBTevo EQ
ibad_0000270c-007_030_001 : NBTevo IBA BMW Animationen und MP3
ibad_0000270d-007_030_001 : NBTevo IBA BMW Texte und Grafiken ECE
ibad_00002710-007_030_001 : NBTevo IBA RR Texte und Grafiken ECE
ibad_0000270b-007_030_001 : NBTevo IBA RR Animationen und MP3
entd_000025d9-003_016_002 : NBTevo Gracenotes DB EU
navd_000024a8-255_007_033 : NBTevo Map ECE
hwe1_00002c14-001_004_001 : NBTevo ECE 20 35up (no MOST, GPS, Vid
eo)
cafd_00001ef6-006_052_007 : NBTevo/EntryEvo CAFD
=====
===== NBTevo/EntryNav2 FSCs =====

100 %

And also, FSCs of the unit



The screenshot shows the FlashXcode - NBTevo ToolKit 1.3 interface. The window title is "FlashXcode - NBTevo ToolKit 1.3 | Flashxcode.com". The interface is divided into two main sections: a control panel on the left and a log/output area on the right.

Control Panel (Left):

- Status: **Connected**
- Connected to: **IP: 169.254.91.39**
- Buttons: Read NBTevo, Read EntryNav2, Read FSC, Reboot Unit, EJECT DVD
- Links: [NBTevo iD4 to iD6](#), [= Youtube Video =](#), [NBTevo iD6 Upgrade](#), [CarPlay Full Screen](#), [Check Latest Version](#)
- Logo: A circular logo with a stylized 'X' and 'C' inside, surrounded by blue and red segments.

Log/Output Area (Right):

- Job Status: **Done**
- Contact: **contact@flashxcode.com**
- Log entries:
 - ibad_0000270d-007_030_001 : NBTevo IBA BMW Texte und Grafiken ECE
 - ibad_00002710-007_030_001 : NBTevo IBA RR Texte und Grafiken ECE
 - ibad_0000270b-007_030_001 : NBTevo IBA RR Animationen und MP3
 - entd_000025d9-003_016_002 : NBTevo Gracenotes DB EU
 - navd_000024a8-255_007_033 : NBTevo Map ECE
 - hweI_00002c14-001_004_001 : NBTevo ECE 20 35up (no MOST, GPS, Video)
 - cafd_00001ef6-006_052_007 : NBTevo/EntryEvo CAFD
- Separator: **===== NBTevo/EntryNav2 FSCs =====**
- FSC List:
 - 009e0001 : NotAvailable - FSC iSpeech NBT
 - 00a00001 : Accepted - FSC Navi Professional ECE / US
 - 01700001 : NotAvailable - FSC Component Protection
 - 006f0001 : NotAvailable - FSC HEADUNIT US SDARS
 - 009f0001 : NotAvailable - FSC TextToSpeech
 - 009c0001 : Accepted - FSC A4A BMW - S6NRA BMW Apps
 - 00e50001 : Accepted - FSC LAP TIMER
 - 01200055 : Accepted - EUROPE EVO 2021-2
 - 01430001 : Accepted - APP NLU Apple CarPlay
 - 016e0001 : Accepted - FSC Voice Control
 - 016f0001 : Accepted - FSC NBTevo Speech TTS
- Status: **Finished!**

A green progress bar at the bottom right indicates **100 %** completion.